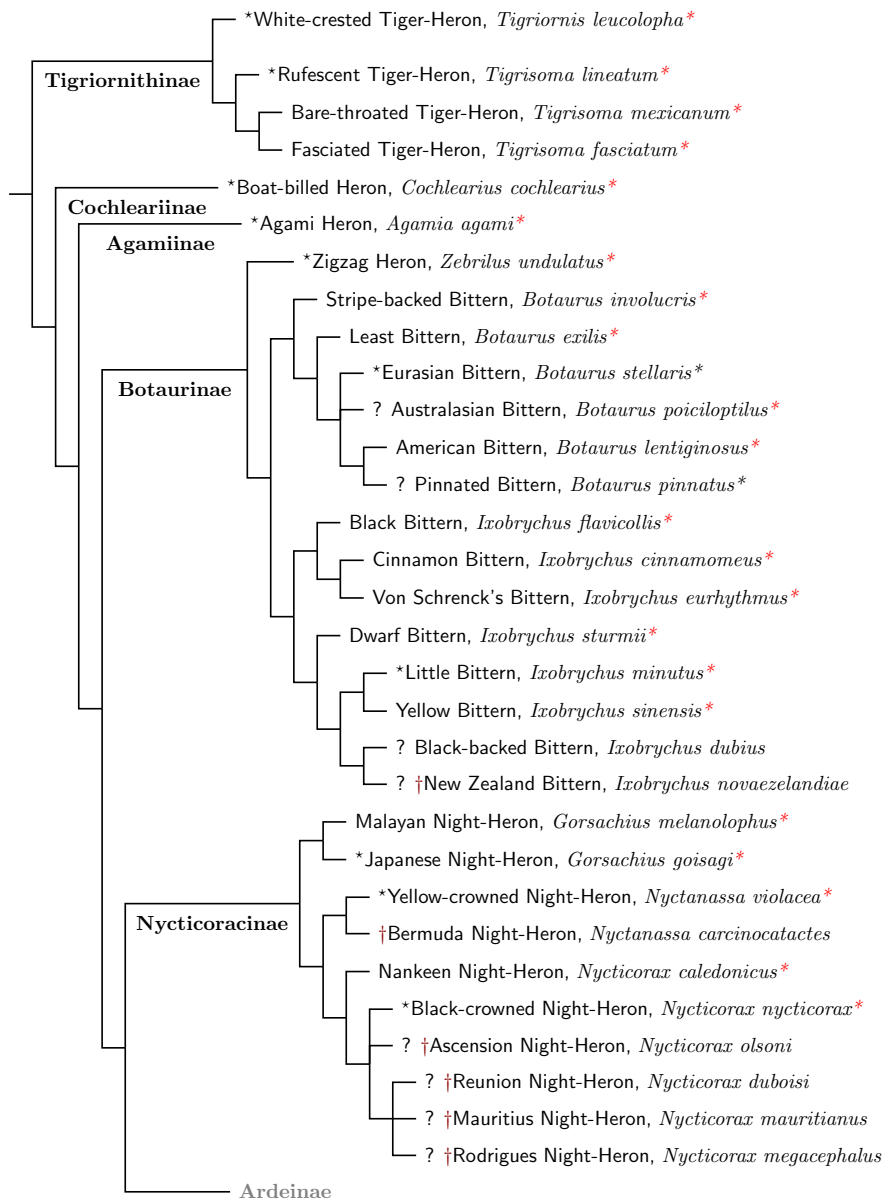


# Ardeidae I



## KEY:

### Prefixes:

\* = Type Species

† = Extinct

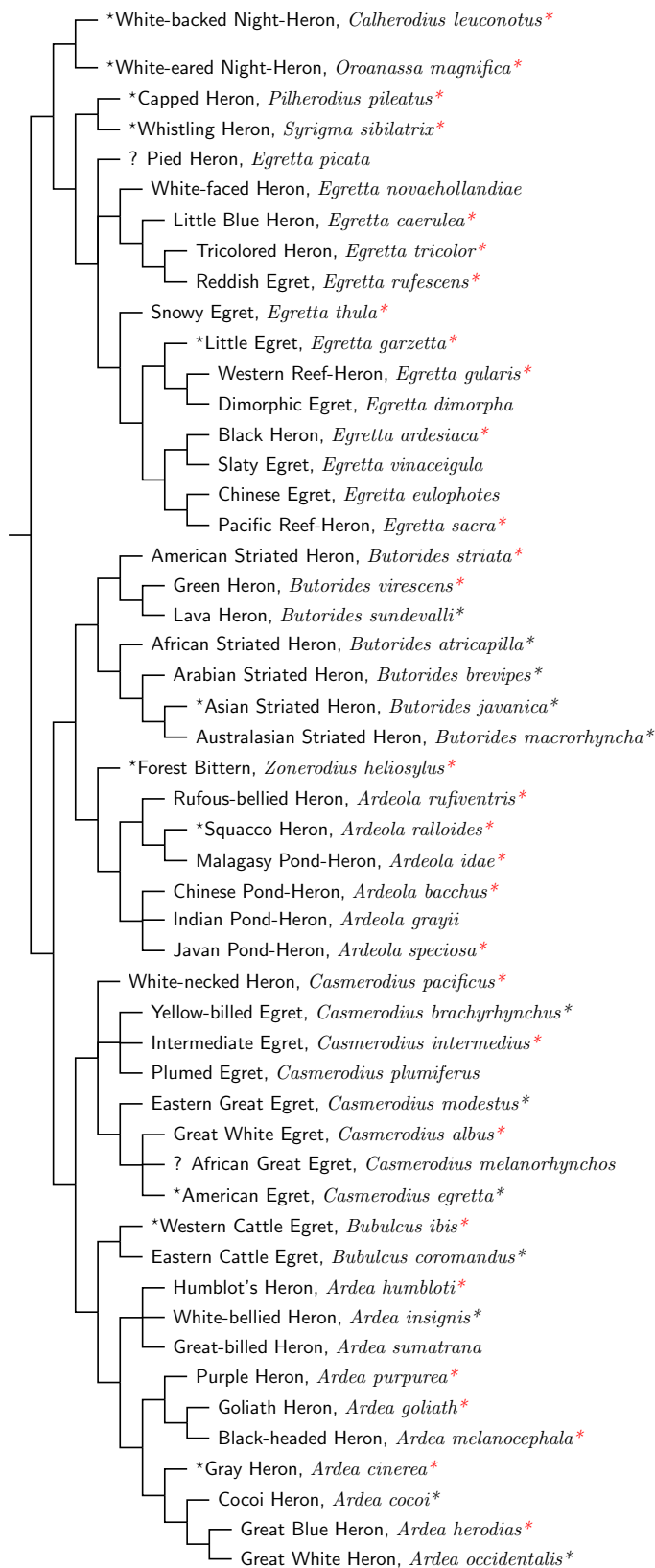
? = Position uncertain

### Suffixes:

\* = DNA, Hruska et al. (2023)

\* = other DNA

## Ardeidae II, Ardeinae



Sources: Chang et al. (2003), Hruska et al. (2023), Huang et al. (2016), McCracken and Sheldon (1998), Mendales (2023), Päckert et al. (2014), Sheldon et al. (2000), Zhou et al. (2014, 2016).